

Safety, pharmacokinetics, and preliminary assessment of efficacy of mecasermin (recombinant human IGF-1) for the treatment of Rett syndrome

Omar S. Khwaja^{a,b,1}, Eugenia Ho^{a,c,1}, Katherine V. Barnes^a, Heather M. O'Leary^a, Luis M. Pereira^d, Yaron Finkelstein^{e,f}, Charles A. Nelson III^g, Vanessa Vogel-Farley^g, Geneva DeGregorio^g, Ingrid A. Holm^{h,i}, Umakanth Khatwa^j, Kush Kapur^{a,k}, Mark E. Alexander^{i,1}, Deirdre M. Finnegan^a, Nicole G. Cantwell^a, Alexandra C. Walco^a, Leonard Rappaport^g, Matt Gregas^{a,k}, Raina N. Fichorova^m, Michael W. Shannon^{f,i,2}, Mriganka Surⁿ, and Walter E. Kaufmann^{a,3}

^aDepartment of Neurology, Boston Children's Hospital and Harvard Medical School, Boston, MA 02115; ^bNeurosciences Translational Medicine, Pharma Research and Early Development, F. Hoffmann–La Roche AG, 4070 Basel, Switzerland; ^cDivision of Neurology, Children's Hospital Los Angeles, University of Southern California, Los Angeles, CA 90027; ^dDepartment of Anesthesia, Perioperative and Pain Medicine, Boston Children's Hospital and Harvard Medical School, Boston, MA 02115; ^eDivisions of Emergency Medicine and Clinical Pharmacology and Toxicology, Hospital for Sick Children, University of Toronto, ON, Canada M5G 1X8; ^fDivision of Emergency Medicine, Boston Children's Hospital, Boston, MA 02115; ^gDivision of Development Medicine, Boston Children's Hospital and Harvard Medical School, Boston, MA 02115; ^hDivision of Genetics and Genomics, and The Manton Center for Orphan Disease Research, Boston Children's Hospital, Boston, MA 02115; ⁱDepartment of Pediatrics, Harvard Medical School, Boston, MA 02115; ^jDivision of Respiratory Diseases, Boston Children's Hospital and Harvard Medical School, Boston, MA 02115; ^kClinical Research Center, Boston Children's Hospital, Boston, MA 02115; ^lDepartment of Cardiology, Boston Children's Hospital, Boston, MA 02115; ^mDepartment of Obstetrics, Gynecology and Reproductive Biology, Laboratory of Genital Tract Biology, Brigham and Women's Hospital and Harvard Medical School, Boston, MA 02215; and ⁿDepartment of Brain and Cognitive Sciences, Massachusetts Institute of Technology, Cambridge, MA 02139

Edited* by Michael Merzenich, Brain Plasticity Institute, San Francisco, CA, and approved February 13, 2014 (received for review June 24, 2013)

Rett syndrome (RTT) is a severe X-linked neurodevelopmental disorder mainly affecting females and is associated with mutations in *MECP2*, the gene encoding methyl CpG-binding protein 2. Mouse models suggest that recombinant human insulin-like growth factor 1 (IGF-1) (rhIGF1) (mecasermin) may improve many clinical features. We evaluated the safety, tolerability, and pharmacokinetic profiles of IGF-1 in 12 girls with *MECP2* mutations (9 with RTT). In addition, we performed a preliminary assessment of efficacy using automated cardiorespiratory measures, EEG, a set of RTT-oriented clinical assessments, and two standardized behavioral questionnaires. This phase 1 trial included a 4-wk multiple ascending dose (MAD) (40–120 µg/kg twice daily) period and a 20-wk open-label extension (OLE) at the maximum dose. Twelve subjects completed the MAD and 10 the entire study, without evidence of hypoglycemia or serious adverse events. Mecasermin reached the CNS compartment as evidenced by the increase in cerebrospinal fluid IGF-1 levels at the end of the MAD. The drug followed nonlinear kinetics, with greater distribution in the peripheral compartment. Cardiorespiratory measures showed that apnea improved during the OLE. Some neurobehavioral parameters, specifically measures of anxiety and mood also improved during the OLE. These improvements in mood and anxiety scores were supported by reversal of right frontal alpha band asymmetry on EEG, an index of anxiety and depression. Our data indicate that IGF-1 is safe and well tolerated in girls with RTT and, as demonstrated in preclinical studies, ameliorates certain breathing and behavioral abnormalities.

Rett syndrome (RTT), the second most common cause of severe intellectual disability in females, is associated in the majority of cases with mutations in *MECP2*, a gene on Xq28 that encodes the transcriptional regulator methyl CpG-binding protein 2 (1). The disorder is characterized by apparent normal early development followed by subsequent psychomotor regression in early childhood, affecting predominantly language and purposeful hand skills (1–3). Gait impairment and stereotypic hand movements are the other two main diagnostic criteria. Other common features, some of which are considered supportive diagnostic criteria, include growth retardation, breathing disturbances, seizures, and behavioral abnormalities (1). Current RTT treatments are focused on managing neurological symptoms (e.g., seizures, anxiety) and medical comorbidities (e.g., constipation, scoliosis), but have had limited success (4).

Initial drug trials for RTT, including two randomized placebo-controlled trials, were based on neurobiological aspects of the disorder derived from pathological and laboratory studies of affected individuals (4, 5). The identification of *MECP2* mutations, which cause a defect in synaptic maturation and maintenance (6), as the etiology of most cases of RTT, represented a major breakthrough for the development of new treatments. The creation of experimental models of the disorder led to the identification of downstream therapeutic strategies (4). Substantial reversal of mouse model neurologic phenotypes by genetic manipulations, at different developmental stages (7, 8), has supported the testing of several candidate drugs (4, 9). A particularly attractive candidate drug is recombinant human insulin-like growth factor 1 (rhIGF-1) (IGF-1). IGF-1 is one of the most potent activators of the AKT signaling pathway and may potentiate the function of brain-derived neurotrophic factor, a key target of MeCP2's transcriptional regulation (10). There is also evidence that MeCP2 regulates the expression of IGF-binding protein 3

Significance

This paper provides unique insights into mechanism-based therapeutics for Rett syndrome (RTT), a devastating neurodevelopmental disorder. This clinical trial was based on pioneer preclinical work from the laboratory of M.S. Outcome measures include clinical instruments, standardized behavioral measures, and biomarkers, the latter being not only objective but also applicable to experimental studies. We believe this work will have major impact on the understanding and treatment of RTT, as well as other neurodevelopmental disorders.

Author contributions: O.S.K., C.A.N., M.W.S., M.S., and W.E.K. designed research; O.S.K., E.H., K.V.B., H.M.O., V.V.-F., G.D., I.A.H., M.E.A., D.M.F., N.G.C., A.C.W., L.R., R.N.F., and W.E.K. performed research; R.N.F. contributed new reagents/analytic tools; K.V.B., H.M.O., L.M.P., Y.F., C.A.N., U.K., K.K., N.G.C., A.C.W., M.G., R.N.F., and W.E.K. analyzed data; and W.E.K. wrote the paper.

The authors declare no conflict of interest.

*This Direct Submission article had a prearranged editor.

¹O.S.K. and E.H. contributed equally to this work.

²Deceased March 10, 2009.

³To whom correspondence should be addressed. E-mail: walter.kaufmann@childrens.harvard.edu.

This article contains supporting information online at www.pnas.org/lookup/suppl/doi:10.1073/pnas.1311141111/-DCSupplemental.

(IGFBP3), a major IGF-1-binding factor that is increased in brains of RTT patients and *Mecp2*-null mice (11). Furthermore, administration of IGF-1 restores dendritic spine dynamics in *Mecp2*-deficient mice (12). The most compelling data supporting IGF-1 as a treatment for RTT come from two studies demonstrating that systemic administration of either full length IGF-1 or its active peptide fragment reverses, at least partially, many RTT-relevant features in *Mecp2*-deficient mice (13, 14). Among the latter are locomotor function impairment, breathing abnormalities, and heart rate irregularities. These improvements seem to reflect IGF-1's effect on defective synaptic maturation and maintenance secondary to *Mecp2* deficit (14).

Mecasermin, recombinant human IGF-1, is already Food and Drug Administration-approved for the long-term treatment of growth failure in children with severe primary IGF-I deficiency (Laron syndrome) (15). We carried out a multiple ascending dose (MAD) study followed by an open-label extension (OLE) period with mecasermin in a group of 12 girls with *MECP2* mutations, 9 of whom had RTT. Here, we report our findings on safety, tolerability, pharmacokinetics (PK), and preliminary assessments of efficacy. The latter include evaluations of neurobehavioral measures, exploratory biomarkers, and their corresponding pharmacodynamics (PD) data.

Results

Twelve girls with *MECP2* mutations participated in the 4-wk MAD; 10 of them continued and completed the subsequent 20-wk OLE. Fig. S1 illustrates the timeline of this phase 1 trial. Participants' demographic and baseline characteristics are shown in Table 1. Nine subjects met full diagnostic criteria for RTT and all continued in the OLE. The 4-wk MAD focused on obtaining PK data, determining cerebrospinal fluid (CSF) penetration, initial evaluations of safety and tolerability, and estimating feasibility of automated cardiorespiratory measures as biomarkers for treatment response. The OLE was designed to obtain additional information on safety, tolerability, and the aforementioned cardiorespiratory measures after chronic dosing, as well as preliminary data on neurologic and behavioral parameters of clinical relevance to RTT. These neurobehavioral evaluations were based on questionnaires and assessments used in an ongoing multisite longitudinal study [the Rett Natural History study (U54 HD061222)] and on two standardized measures of problem behaviors. Data on safety, tolerability, and PK is reported for all 12 *MECP2* mutation-positive subjects, whereas preliminary efficacy and PD data only for the 9 subjects with RTT.

During the MAD, mecasermin dosing was escalated over a 4-wk period, beginning with twice daily (BID) injections of 40 µg/kg the first week, 80 µg/kg the second week, and 120 µg/kg

during the third and fourth weeks, as depicted in Fig. S2. CSF samples were obtained before drug administration and after completing the fourth week (Fig. S2). Fig. 1 illustrates levels of IGF-1 and IGFBP3, the main IGF-1-binding protein (10, 11), in serum and CSF. There was a significant increase in IGF-1 but not IGFBP3 in both compartments at the end of the MAD. At the start of the OLE, subjects went through an identical dose escalation, staying on the maximum dose of 120 µg/kg for the remaining 17 wk of treatment.

Serum IGF-1 concentrations were first analyzed by a non-compartmental analysis (16) comparing different doses. A log-linear terminal phase was observed after 4–6 h postdosing (Fig. 2A). The slopes of this decay allowed the estimation of terminal elimination half-lives ($t_{1/2,\beta}$) and mean residence times in the body (MRT_b) as shown in Table S1. Maximal concentrations (C_{max}) and the times to reach them (t_{max}) were also documented. The areas under the curve (AUC_t ; t , time of last observation) up to the last observation lacked dose proportionality, suggesting nonlinear kinetics (Fig. 2B). The starting dose of 40 µg/kg elicited a mean $AUC_t = 2,050$ ng·h/mL, while the area for twice that dose increased by just 75%. When the starting dose was tripled, the increment was nearly the same. Nonlinearity is also supported by the early parts of the concentrations profiles, with upward deviations after reaching maximum levels. We also carried out a compartmental analysis using a two-compartment model based on calculated Akaike and Bayesian information criteria, as well as on the residuals analysis (16). A Michaelis–Menten elimination kinetics (16) with first order absorption and a distribution clearance parameterization provided the best goodness of fit, compared with first order or mixed elimination alternatives. The volume of distribution for the central compartment (V_1/F) was estimated to be 7.71 ± 0.78 L (mean \pm SE) and for the peripheral compartment it was 33.5 ± 16 L. The other parameters in the model were estimated for intercompartmental clearance as 0.38 ± 0.048 L/h, for the maximum elimination rate as 1.02 ± 0.4 µg·kg⁻¹·h⁻¹, and for the Michaelis–Menten constant as 4.62 ± 3.7 ng/mL. Individual subjects' noncompartmental curves are depicted in Fig. S3 and Fig. S4 demonstrates the appropriateness of the proposed models (i.e., predicted vs. observed grouped data).

Based on direct compliance monitoring and serum levels, s.c. injections were well tolerated and no incidences of hypoglycemia or errors in dose administration were detected. During the MAD, one serious adverse event occurred (respiratory distress) and was determined to be unrelated to the study drug (10, 15). During the MAD, only two adverse events (nausea and vomiting) were considered as probably related to the study drug and preceded withdrawal from the OLE. A similar profile of safety and

Table 1. Subject demographics and characteristics at baseline

Age, y	Diagnosis	Stage	<i>MECP2</i> mutation	Concomitant medications	Breathing phenotype
3	Classic	II	R168X	None	None
7	MRD*	n/a [†]	C1135_1142 del	None	None
7	MRD*	n/a [†]	C1135_1142 del	None	None
2	Classic	II	C790_808 del	Levetiracetam	BH, HV, AE
5	Classic	III	Large del exon 3 and 4	None	BH, HV
4	Classic	III	C1159_1273 del	None	AE [‡]
8	Classic	III	R255X	Lamotrigine, lorazepam, melatonin	BH, AE [§]
4	Classic	III	R255X	None	AE
8	Classic	III	T158M	None	BH, AE [§]
3	MRD	n/a [†]	R306C	None	None
10	Classic	III	Large del exon 1 and 2	Gabapentin, diastat	BH, AE, cyanosis [§]
8	Classic	III	P322L	Levetiracetam	BH, AE, cyanosis [§]

AE, air expulsion; BH, breath holding; HV, hyperventilation.

*Subjects did not continue in OLE.

[†]Staging not applicable (n/a) to non-RTT.

[‡]Subject with mild apnea (apneic episodes >10 s and <5 apneas per hour).

[§]Subjects with moderate–severe apnea (apneic episodes >10 s and >5 apneas per hour).

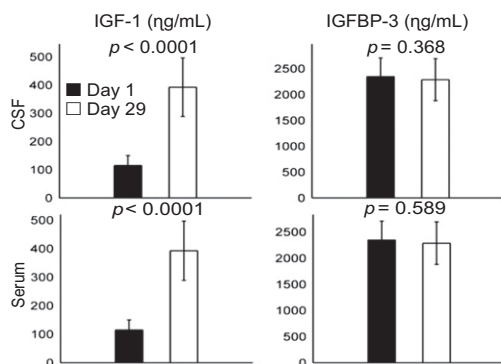


Fig. 1. IGF-1 and IGFBP-3 levels in CSF and serum pre- and post-MAD. The Mean and SE of IGF-1 and IGFBP-3 in serum and CSF are shown (P values based on Student's t test). CSF and serum samples were obtained before IGF-1 administration on day 1 and 1–2 h after dose on day 29 ($n = 12$). Levels of IGF-1 in serum and CSF more than doubled, indicating IGF-1 reaches the CNS compartment. IGFBP3, the main IGF-1-binding protein, did not significantly increase in serum or CSF.

tolerability, with no unexpected, progressive, or related serious adverse events, was observed during the OLE. Although a high proportion of the subjects had abnormal cholesterol levels at baseline, these did not worsen during the trial. For details on adverse events, see [Table S2](#).

Using cardiorespiratory data obtained with a BioRadio device (17), we calculated the apnea (18) and hyperventilation (19) indices and compared the start and end of the MAD (pre- to post-MAD), start and end of the OLE (pre- to post-OLE), and beginning and end of the entire trial (pre-MAD to post-OLE). We applied paired t tests, Wilcoxon signed rank tests, and a random intercept (RI) model, illustrating time effects at each time point (post-MAD, pre-OLE, and post-OLE compared with pre-MAD). As illustrated in [Table 2](#) (see “apnea index by time point” entries), based on the RI model which accounts for within-subjects correlation, the improvement in the apnea index was significant at the end of the OLE in comparison with start of the MAD. Improvements in the apnea index were comparable when only the five subjects with clinically significant apnea (apneic episodes >10 s), four of whom had moderate–severe

apnea, were included in the analyses ([Table S3](#)). [Fig. S5](#) depicts the trajectories of the apnea index for all subjects. In addition, despite the small sample, we tested the effect of age as a covariate in the RI model for all nine subjects with RTT. The effect of age and its interaction with the respective time points was positive and significant, namely the improvements in the apnea index were more significant in older subjects. These patterns of improvement were not observed for the hyperventilation index (see “hyperventilation index by time point” entries in [Table 2](#)). The specificity of the apnea index improvements are underscored when other respiratory parameters (20), typically not used in the clinical context, are examined. [Table S4](#) shows that during the OLE, for instance, the percent epoch in slow respiratory rate and the mean total respiratory cycle times (T_{tot}) in slow respiration also decreased significantly but not the percent epoch in rapid respiratory rate and the mean T_{tot} in rapid respiration. Similar results were found in the MAD. There were also changes in the cardiac parameters, namely a reduction in the percent epoch in normal heart rate with a concurrent increase in the percent epoch in rapid heart rate when the beginning and end of the OLE were compared. Variance in heart rate also decreased, although not significantly ([Table S4](#)). Similar to the breathing parameters, changes in cardiac variables demonstrated the same trend during the shorter MAD and the longer OLE. Preliminary PD analyses indicate a positive response, namely a decrease in the apnea index, over the course of treatment. Just in a few cases this decrease leveled off or, in one case, seemed to revert at the end of the MAD ([Fig. S6](#) illustrates examples of different PD profiles).

During the OLE, preliminary efficacy data were gathered by administering two RTT-oriented clinician assessments and two standardized behavioral measures to the nine RTT subjects. We focused on established instruments already reported in the literature (21–25), and did not include parent or clinician global impression assessments, to decrease data subjectivity and allow for future comparisons with other publications. Neurologic and behavioral parameters were measured by two evaluations from the Rett Natural History study (21), as well as the Rett Syndrome Behavioral Questionnaire (RSBQ) (22, 23) and the Anxiety Depression and Mood Scale (ADAMS) (24, 25). We performed exploratory comparisons between onset and end of the OLE using t tests and the Wilcoxon signed rank test. Although not significantly different, total scores showed a trend toward improvement in all instruments. We then organized the subscales of these measures into neurobehavioral domains (e.g., motor, breathing/autonomic, problem behavior) and subjected them to exploratory t tests comparing pre- to post-OLE. We followed these hierarchical analyses by examining the items in the same subscales. These analyses revealed significant or trend-level changes in the breathing/autonomic and behavioral domains. However, the direction of change in breathing and peripheral autonomic subscales were inconsistent. For instance, breath-holding items in the RSBQ showed improvement whereas those on the clinical assessment (CA) and motor-behavioral assessment (MBA) worsened. Similar inconsistencies were present for peripheral autonomic scales/items. Subscales and items representing alertness, activity, anxious behaviors, or abnormal mood demonstrated consistent improvements, whereas those recording irritability, aggressiveness, disruptive/hyperactive behavior, communication, and motor domains did not ([Table 3](#) and [Fig. S7](#)).

Relative right-sided resting frontal (alpha band) EEG asymmetry has been used in multiple studies as an index of anxiety and depression (26), including pediatric populations (27). Left (L) greater than right (R) alpha power is typically interpreted as more positive vs. negative (less anxious vs. more anxious) behavior, whereas $R > L$ is viewed as the reverse. As depicted in [Fig. 3](#), six subjects evaluated during the OLE with EEG demonstrated $R > L$ asymmetry (i.e., more anxious). Although the degree of asymmetry was variable, five of the six showed a decrease in the asymmetry index and in three it was reversed. A paired-samples t test revealed that this group trend toward $L > R$ asymmetry (i.e., reduction in anxiety) was significant. Moreover,

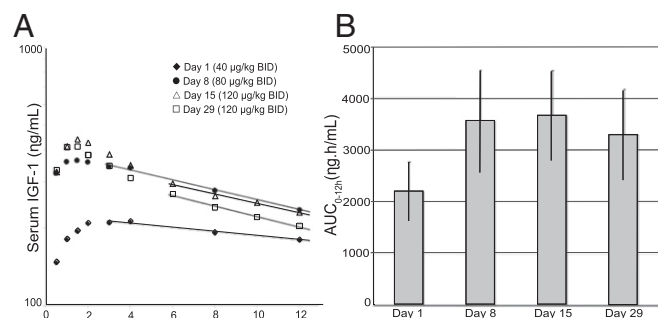


Fig. 2. (A) Serum IGF-1 concentrations show a log-linear terminal phase 4–6 h after dosing. Serum IGF-1 concentrations were analyzed by a noncompartmental analysis comparing escalating doses at days 1, 8, 15, and 29. A log-linear terminal phase was observed after 4–6 h postdosing. The slopes of decay allowed the estimation of $t_{1/2\alpha}$ and $MRT_{1/2}$ are described in [Table S1](#). (B) As shown, the mean and SE of the AUC_t of IGF-1 suggests nonlinear kinetics. The AUC_t up to the last observation lacked dose proportionality, suggesting a nonlinear kinetics. The lowest dose of 40 $\mu\text{g}/\text{kg}$ BID dose elicited a mean $AUC_t = 2,050$ ng·h/mL whereas the area for twice that dose (80 $\mu\text{g}/\text{kg}$ BID) incremented just about 75%. When the lowest dose was tripled (120 $\mu\text{g}/\text{kg}$ BID) at day 15, the increment was nearly the same. The Mean and SE of the AUC_t in serum and CSF are shown.

the group reduction in the R > L asymmetry index correlated with improvements in measures of mood abnormalities and, to lesser extent in measures of breathing abnormalities and anxiety (Table S5). Analyses of cardiorespiratory and neurobehavioral parameters excluding the two individuals in Hagberg stage II (i.e., end of regression period) did not yield significantly different results from those including all nine RTT subjects.

Discussion

Our findings indicate that IGF-1 is safe for use in girls with *MECP2* mutations, including those meeting diagnostic criteria for RTT. We found that mecasermin reaches the CNS and that its kinetics are complex, as expected from a protein that is cleaved and binds to its receptor and interacting proteins (10, 11, 28, 29). Our preliminary efficacy analyses suggest that, when administered over several weeks, mecasermin improved certain aspects of the RTT phenotype, most notably, abnormal behaviors (i.e., anxiety) and breathing abnormalities (i.e., apnea). Changes in breathing abnormalities were better characterized using automated measurements of cardiorespiratory function. The evaluation of potential biomarkers also successfully delineated behavioral abnormalities with right-sided frontal alpha band EEG asymmetry, an index of anxiety and depression, showing a trend toward reversal in most RTT subjects exhibiting the phenomenon. Overall, the findings of this phase 1 trial are in agreement with preclinical data suggesting IGF-1 is a safe and beneficial treatment of RTT (13, 14).

As recently reported by Pini et al. (30), mecasermin administration is relatively safe and well tolerated. In our own phase 1 study, several expected adverse events, such as increased tonsil size and related snoring, were observed but were relatively mild and nonprogressive and did not lead to withdrawal from the trial. Most subjects had elevated cholesterol; however, this preceded IGF-1 administration and did not worsen with the drug. Therefore, concerns about metabolic syndrome raised by a recent animal study (31) were not supported by our trial. The most common adverse event, early signs of puberty, may be significant as some reports have shown accelerated puberty (i.e., early adrenarche) in RTT (32, 33). Nonetheless, because hormonal levels were within normal ranges throughout the study, this issue deserves further investigation. In summary, at the doses used in this (240 $\mu\text{g}\cdot\text{kg}^{-1}\cdot\text{d}^{-1}$) and the previously published (200 $\mu\text{g}\cdot\text{kg}^{-1}\cdot\text{d}^{-1}$) trial (30), mecasermin is a safe treatment.

Our data indicate that mecasermin administration increases IGF-1 levels in the CNS (10); therefore, our data on efficacy and some of the adverse events could be attributed to the presence of IGF-1 in the brain. The IGF-1 increase in CSF depicted in Fig. 1 is comparable to the one in positive responders to fluoxetine (34) or adrenocorticotropic hormone (35). The levels of IGFBP3, the main IGF-1-binding protein (10), were unaffected by the increase in IGF-1. This suggests that increased IGFBP3 as a mechanism underlying RTT pathophysiology (11) is not corrected by mecasermin, at least at the dosages used in this trial.

Despite their normal serum levels, our subjects exhibited a nonlinear PK profile of IGF-1 (36). This is not unexpected for a protein with complex regulation, mechanism of action, and pleiotropic effects (10, 37, 38). Recent data demonstrating activation of different signaling pathway by full length IGF-1 and its

active breakdown product (29) highlights this issue. The dose used in this study, 240 $\mu\text{g}\cdot\text{kg}^{-1}\cdot\text{d}^{-1}$, was selected based on the investigational medicinal product's current approved labeling and its efficacy in preclinical studies (13, 14). Several PK parameters in our study (e.g., C_{max} , $t_{1/2}$, t_{max}) and their changes with increasing doses of mecasermin (C_{max}) are comparable to those found in healthy volunteers and children with primary IGF-1 deficiency (39). As we observed, chronic treatment PK studies have suggested a plateau effect for doses between 160–240 $\mu\text{g}\cdot\text{kg}^{-1}\cdot\text{d}^{-1}$, probably reflecting saturation of IGFBP3 (38). The nonlinear PK kinetics, greater volume distribution in the peripheral than the central compartment, and lack of change in IGFBP3 in serum and CSF suggest that serum levels of IGF-1 for may not be the best basis for dosing and that higher or chronic dosing in RTT may not necessarily result in higher exposures or a sustained exposure–response relationship. This leads to careful consideration of dosing for future studies where acute intermittent pulses of mecasermin may be more effective than chronic dosing. The mouse model may be useful in exploring optimum dosing regimens.

Our study confirmed the feasibility of automated cardiorespiratory measurements as biomarkers of treatment response (40). It also indicates that these breathing evaluations may be more reliable and valid than clinical instruments because parent questionnaire data were in disagreement with clinicians' observations. Whether these discrepancies reflect different lengths of observations (i.e., days to weeks for parents vs. minutes for clinicians) is unclear. Regardless, the measurements obtained during both the MAD and OLE demonstrate a consistent trend toward improved breathing. Other parameters obtained during the automated assessments further emphasize IGF-1's selective effect on slow breathing, initially shown in the RTT mouse model (14). Although the lack of improvement in hyperventilation may have been influenced by technical issues (e.g., movement artifact), the selective effect on apnea is still desirable as it is perceived as more concerning clinically (41). Our preliminary dose–response analyses suggest that reduction in the apnea index is the result of IGF-1 administration; nonetheless, the reverting trend observed in a few subjects toward the end of the MAD (Fig. S6) may reflect the aforementioned saturation kinetics of IGF-1. Additional PD analyses, focusing on exposure–response relationships, need to be conducted to clarify this issue. The effects of IGF-1 on cardiac function were challenging to interpret. Although decreased heart rate variability may be seen as positive, its association with a trend toward higher heart rate may be considered a potential side effect. However, heart rate values remained within the wide normal range (42). Although the possible effect of mecasermin on heart rate warrants further investigation, our findings are in line with the partial correction of bradycardia in the *Mecp2*-null mouse (14).

Our preliminary efficacy evaluations on neurobehavioral parameters provided a mixed picture. Whereas some measures indicated improvements, others worsened. This was particularly the case for abnormalities in breathing and peripheral autonomic function. A similar inconsistent pattern was found for externalizing problem behaviors, such as disruptive and irritable behaviors. Two other important domains—communication and motor function, including abnormal movements—did not show a change.

Table 2. Summary of breathing indices for all RTT subjects by time point (n = 9)

Breathing indices	Pre-MAD	Post-MAD	Pre-OLE	Post-OLE	Pre-MAD to Post-OLE
Apnea index (mean \pm SE)	10.11 \pm 19.34	5.11 \pm 9.68	4.67 \pm 6.81	3.00 \pm 5.72	–7.12 \pm 4.58
Student's <i>t</i> <i>P</i>	–	–	–	–	0.159
Wilcoxon signed rank <i>P</i>	–	–	–	–	0.094
RI model <i>P</i>	–	–	–	–	0.018
Hyperventilation index (mean \pm SE)	3.55 \pm 6.71	3.00 \pm 6.59	6.44 \pm 16.86	3.66 \pm 8.97	0.12 \pm 0.93
Student's <i>t</i> <i>P</i>	–	–	–	–	0.908
Wilcoxon signed rank <i>P</i>	–	–	–	–	0.875
RI model <i>P</i>	–	–	–	–	0.963

Table 3. Neurobehavioral measures between V1 and V5

Measure	V1 mean	V5 mean	Mean difference	Mean difference SE	Student's <i>t P</i>	Wilcoxon signed rank <i>P</i>
Behavioral subtotal (MBA)	24.00	19.88	-4.11	1.11	0.006	0.016
Passive/unengaged (CA)	0.33	0.00	-0.33	0.17	0.081	0.250
Intermittent laughter (CA)	0.33	0.00	-0.33	0.17	0.081	0.250
Fear/anxiety subtotal (RSBQ)	3.55	2.77	-0.79	0.66	0.274	0.281
Spells of laughter at night (RSBQ)	0.77	0.44	-0.33	0.17	0.081	0.250
Social avoidance subtotal (ADAMS)	4.55	3.11	-1.44	0.84	0.122	0.109

V1, visit 1 of OLE; V5, visit 5 of OLE.

However, behaviors under the categories of anxiety (i.e., including fear and avoidance) and mood abnormalities (e.g., inappropriate laughter) showed modest although consistent improvements among measures that included two standardized behavioral scales (i.e., RSBQ, ADAMS). These findings were supported by the partial or complete reversal of right-sided alpha band frontal EEG asymmetry in five of the six subjects presenting with this phenomenon, which correlated with improved scores on mood abnormalities and anxiety. Because EEG frontal asymmetry has been linked to depression and particularly to anxiety in children (26, 27), its use in RTT and other neurodevelopmental disorders may serve as an effective tool for assessing drug efficacy. Our findings of IGF-1's effect on anxiety are in agreement with data from studies in the animal model (14).

The data presented here suggest that administration of IGF-1 is a promising treatment for RTT. Its safety and tolerability profiles are acceptable considering the severity of the targeted symptoms. However, the potential long-term use of mecamermin should be weighed against its potential effects on puberty, which is already accelerated in RTT (32, 33). The complex pharmacology of IGF-1 makes the determination of an optimal dosage difficult; the positive effects reported here indicate that long-term treatment may be necessary, which is not surprising considering IGF-1's likely effects on synaptic maturation and maintenance (6, 13, 14). The effect of IGF-1 was mild and selective, influencing certain cardiorespiratory and neurobehavioral features of RTT. Although this may seem unexpected given the context of IGF-1's extensive efficacy in the mouse model (14), it is not surprising compared with trial results in other neurodevelopmental disorders. In fragile X syndrome, mGluR5 antagonists (43) and GABA-B agonists (44) had similarly selective effects in human trials, but were preceded by a more generalized reversal of the phenotype in preclinical studies (45, 46). Interaction between the primary genetic defect and the individual's own genetic background is one of several mechanisms that may contribute to these discrepancies.

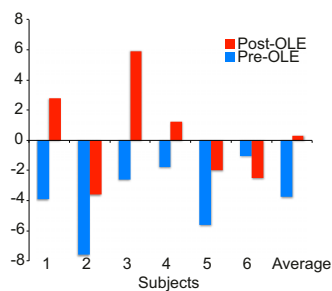


Fig. 3. Right-sided frontal alpha band EEG asymmetry shows a trend toward reversal. Greater relative L vs. R alpha activity has been interpreted as greater positive effect/less anxiety and greater R vs. L the opposite. Six subjects evaluated before the OLE demonstrated R > L asymmetry. Although the degree of asymmetry was variable after OLE, five of the six showed a decrease in the asymmetry index and in three there was a reversal. A paired-samples *t* test revealed significant group differences pre- and post-OLE.

It is important to recognize the limitations of the present study. The first limitation is the relatively small sample and age range considering the dynamics of RTT. Nine of the subjects met RTT diagnostic criteria and only seven were at a stable period (Hagberg stage III) (2). Nevertheless, analyses excluding the two individuals in stage II did not yield different results. Although the inclusion of twins with *MECP2*-related disorder (MRD) allowed for the examination of safety and PK in individuals with other MRDs, it also decreased the variability of the sample. This study was designed to assess CNS penetration and PK profile of IGF-1, and to test the feasibility of automated cardiorespiratory measures; as such, RTT subjects were not selected on the basis of breathing abnormalities or specific profiles of neurobehavioral impairment. This increased the heterogeneity of the already small sample, leading to diminished statistical power. Analyses of the clinically oriented measures used discovery type statistics without correcting for multiple comparisons and emphasizing the consistency of the body of data rather than specific parameters. On the other hand, comparisons between onset and end of the OLE, without considering intermediate time points may have overlooked transient positive effects of IGF-1. Although measures from the Rett Natural History study (21) were selected because of their relevance, these instruments have not been validated as outcome measures, and discrepancies between the parent questionnaire and clinician assessment need to be further examined. Also, the ADAMS (24, 25), has not been validated in RTT. Increased care and placebo effect could have also influenced our neurobehavioral findings. Nonetheless, the use of automated measures such as the BioRadio for cardiorespiratory function (17) or EEG asymmetry profiles for anxiety and mood (26, 27) strengthened clinician- and parent-reported data and support future exploration of biomarkers. Additional biomarker data—namely the Q sensor (47) for recording motion and hand stereotypies and visual evoked potentials for examining cortical function (48)—was collected as part of this trial and needs to be analyzed and reported in future publications.

Methods

Sample. Characteristics of our cohort are shown in Table 1 and *SI Methods*. The study was approved by the Institutional Review Board of Boston Children's Hospital and informed consent was obtained from the parent of each participant. Further information is provided in *SI Methods*.

Study Design and Safety Measures. Unblinded phase 1 study designed to establish PK profile (4-wk MAD) and long-term safety and tolerability (20-wk OLE) of IGF-1 in girls with RTT (Fig. S1). Subjects received twice daily (BID) s.c. injections at 40 $\mu\text{g}/\text{kg}$ (week 1), 80 $\mu\text{g}/\text{kg}$ (week 2), and 120 $\mu\text{g}/\text{kg}$ (weeks 3, 4, OLE) (Fig. S2). Safety was assessed by evaluations listed in Table S6. Detailed information is provided in *SI Methods*.

PK and PD Analyses. Sera were obtained at different daily time points during the MAD, and at each visit during the OLE, while CSF only at the beginning and end of the MAD (Fig. S2). Methodologies for IGF-1 and IGFBP3 measurements, and PK and pharmacodynamics analyses, are detailed in *SI Methods*.

Automated Cardiorespiratory Measures. Time synchronized chest respiratory inductive plethysmography, three lead electrocardiography, and video recordings are detailed in *SI Methods*.

Neurobehavioral Assessments. Table S4 lists the multiple measures of neurologic and other functions obtained during the OLE. Additional information is presented *SI Methods*.

EEG Recordings. EEG recording, spectral power analysis, and frontal asymmetry scores were performed as reported (49–51) and detailed in *SI Methods*.

Statistical Analyses. Standard descriptive and comparative statistics were employed. Specific tests are specified in *Results* and *SI Methods*.

- Neul JL, et al.; RettSearch Consortium (2010) Rett syndrome: Revised diagnostic criteria and nomenclature. *Ann Neurol* 68(6):944–950.
- Hagberg B (2002) Clinical manifestations and stages of Rett syndrome. *Ment Retard Dev Disabil Res Rev* 8(2):61–65.
- Marschik PB, et al. (2013) Changing the perspective on early development of Rett syndrome. *Res Dev Disabil* 34(4):1236–1239.
- Tarquino DC, Kaufmann WE (2014) Targeted treatments in Rett syndrome. *New Developments in Treatment for Neurodevelopmental Disorders: Targeting Neurobiological Mechanisms*, eds Hagerman R, Hendren R (Oxford Univ Press, New York).
- Percy AK (2002) Clinical trials and treatment prospects. *Ment Retard Dev Disabil Res Rev* 8(2):106–111.
- Kaufmann WE, Johnston MV, Blue ME (2005) MeCP2 expression and function during brain development: Implications for Rett syndrome's pathogenesis and clinical evolution. *Brain Dev* 27(Suppl 1):S77–S87.
- Guy J, Gan J, Selfridge J, Cobb S, Bird A (2007) Reversal of neurological defects in a mouse model of Rett syndrome. *Science* 315(5815):1143–1147.
- Robinson L, et al. (2012) Morphological and functional reversal of phenotypes in a mouse model of Rett syndrome. *Brain* 135(Pt 9):2699–2710.
- Khawaja OS, Sahin M (2011) Translational research: Rett syndrome and tuberous sclerosis complex. *Curr Opin Pediatr* 23(6):633–639.
- Guan J, Mathai S, Liang HP, Gunn AJ (2013) Insulin-like growth factor-1 and its derivatives: Potential pharmacological application for treating neurological conditions. *Recent Patents CNS Drug Discov* 8(2):142–160.
- Itoh M, et al. (2007) Methyl CpG-binding protein 2 (a mutation of which causes Rett syndrome) directly regulates insulin-like growth factor binding protein 3 in mouse and human brains. *J Neuropathol Exp Neurol* 66(2):117–123.
- Landi S, et al. (2011) The short-time structural plasticity of dendritic spines is altered in a model of Rett syndrome. *Sci Rep* 1:45.
- Tropea D, et al. (2009) Partial reversal of Rett Syndrome-like symptoms in MeCP2 mutant mice. *Proc Natl Acad Sci USA* 106(6):2029–2034.
- Castro J, et al. (2012) Functional recovery with recombinant human IGF1 treatment in a mouse model of Rett syndrome. *Soc Neurosci*, 2012 (abstr).
- Backeljauw PF, Chernausek SD (2012) The insulin-like growth factors and growth disorders of childhood. *Endocrinol Metab Clin North Am* 41(2):265–282, v.
- Gabrielsson J, Weiner D (2007) *Pharmacokinetic and Pharmacodynamic Data Analysis: Concepts and Applications* (Swedish Pharmaceutical Press, Stockholm), 4th Ed.
- Leino K, Nunes S, Valta P, Takala J (2001) Validation of a new respiratory inductive plethysmograph. *Acta Anaesthesiol Scand* 45(1):104–111.
- Iber C (2007) *The AASM Manual for the Scoring of Sleep and Associated Events: Rules, Terminology and Technical Specifications* (American Academy of Sleep Medicine, Westchester, IL).
- Kerr AM, Julu POO (1999) Recent insights into hyperventilation from the study of Rett syndrome. *Arch Dis Child* 80(4):384–387.
- Hsu YW, et al. (2004) Dexmedetomidine pharmacodynamics: Part I: Crossover comparison of the respiratory effects of dexmedetomidine and remifentanyl in healthy volunteers. *Anesthesiology* 101(5):1066–1076.
- Percy AK, et al. (2010) Rett syndrome diagnostic criteria: Lessons from the Natural History Study. *Ann Neurol* 68(6):951–955.
- Mount RH, Charman T, Hastings RP, Reilly S, Cass H (2002) The Rett Syndrome Behaviour Questionnaire (RSBQ): Refining the behavioural phenotype of Rett syndrome. *J Child Psychol Psychiatry* 43(8):1099–1110.
- Kaufmann WE, et al. (2012) Social impairments in Rett syndrome: Characteristics and relationship with clinical severity. *J Intellect Disabil Res* 56(3):233–247.
- Esbensen AJ, Rojahn J, Aman MG, Ruedrich S (2003) Reliability and validity of an assessment instrument for anxiety, depression, and mood among individuals with mental retardation. *J Autism Dev Disord* 33(6):617–629.
- Cordeiro L, Ballinger E, Hagerman R, Hessl D (2011) Clinical assessment of DSM-IV anxiety disorders in fragile X syndrome: Prevalence and characterization. *J Neurodev Disord* 3(1):57–67.
- Thibodeau R, Jorgensen RS, Kim S (2006) Depression, anxiety, and resting frontal EEG asymmetry: A meta-analytic review. *J Abnorm Psychol* 115(4):715–729.
- Kagan J, Snidman N (1999) Early childhood predictors of adult anxiety disorders. *Biol Psychiatry* 46(11):1536–1541.
- O'Kusky J, Ye P (2012) Neurodevelopmental effects of insulin-like growth factor signaling. *Front Neuroendocrinol* 33(3):230–251.
- Corvin AP, et al. (2012) Insulin-like growth factor 1 (IGF1) and its active peptide (1-3) IGF1 enhance the expression of synaptic markers in neuronal circuits through different cellular mechanisms. *Neurosci Lett* 520(1):51–56.
- Pini G, et al. (2012) IGF1 as a potential treatment for Rett syndrome: Safety assessment in six Rett patients. *Autism Res Treat* 2012:679801.
- Pitcher MR, et al. (2013) Insulinotropic treatments exacerbate metabolic syndrome in mice lacking MeCP2 function. *Hum Mol Genet* 22(13):2626–2633.
- Knight O, et al. (2013) Pubertal trajectory in females with Rett syndrome: A population-based study. *Brain Dev* 35(10):912–920.
- Bag VN, et al. (2013) Report of the first case of precocious puberty in Rett syndrome. *J Pediatr Endocrinol Metab* 26(9-10):937–939.
- Makkonen I, Kokki H, Kuikka J, Turpeinen U, Riikonen R (2011) Effects of fluoxetine treatment on striatal dopamine transporter binding and cerebrospinal fluid insulin-like growth factor-1 in children with autism. *Neuropediatrics* 42(5):207–209.
- Riikonen RS, Jääskeläinen J, Turpeinen U (2010) Insulin-like growth factor-1 is associated with cognitive outcome in infantile spasms. *Epilepsia* 51(7):1283–1289.
- Tercia, Inc. (2007) *Investigator's Brochure: Recombinant Human Insulin-Like Growth Factor-1* (Tercia, Inc., a subsidiary of the Ipsen Group, Brisbane, CA).
- Skaper SD (2011) Peptide mimetics of neurotrophins and their receptors. *Curr Pharm Des* 17(25):2704–2718.
- Rosenbloom AL (2009) Mecasermin (recombinant human insulin-like growth factor I). *Adv Ther* 26(1):40–54.
- Grahnen A, et al. (1993) Pharmacokinetics of recombinant human insulin-like growth factor I given subcutaneously to healthy volunteers and to patients with growth hormone receptor deficiency. *Acta Paediatr Suppl* 82(Suppl 391):9–13, discussion 14.
- Peña F, García O (2006) Breathing generation and potential pharmacotherapeutic approaches to central respiratory disorders. *Curr Med Chem* 13(22):2681–2693.
- Rohdin M, et al. (2007) Disturbances in cardiorespiratory function during day and night in Rett syndrome. *Pediatr Neurol* 37(5):338–344.
- Fleming S, et al. (2011) Normal ranges of heart rate and respiratory rate in children from birth to 18 years of age: A systematic review of observational studies. *Lancet* 377(9770):1011–1018.
- Dölen G, et al. (2007) Correction of fragile X syndrome in mice. *Neuron* 56(6):955–962.
- Henderson C, et al. (2012) Reversal of disease-related pathologies in the fragile X mouse model by selective activation of GABAB receptors with arbaclofen. *Sci Transl Med* 4(152):ra128.
- Jacquemont S, et al. (2011) Epigenetic modification of the FMR1 gene in fragile X syndrome is associated with differential response to the mGluR5 antagonist AFQ056. *Sci Transl Med* 3(64):ra1.
- Berry-Kravis EM, et al. (2012) Effects of STX209 (arbaclofen) on neurobehavioral function in children and adults with fragile X syndrome: A randomized, controlled, phase 2 trial. *Sci Transl Med* 4(152):ra127.
- Poh MZ, Swenson NC, Picard RW (2010) A wearable sensor for unobtrusive, long-term assessment of electrodermal activity. *IEEE Trans Biomed Eng* 57(5):1243–1252.
- Stauder JE, Smeets EE, van Mil SG, Curfs LG (2006) The development of visual- and auditory processing in Rett syndrome: An ERP study. *Brain Dev* 28(8):487–494.
- Jasper H (1958) Report on the committee on methods of clinical examination in electroencephalography. *Electroencephalogr Clin Neurophysiol* 10:370–375.
- McManis MH, Kagan J, Snidman NC, Woodward SA (2002) EEG asymmetry, power, and temperament in children. *Dev Psychobiol* 41(2):169–177.
- Marshall PJ, Fox NA, Bucharest Early Intervention Project Core Group (2004) A comparison of the electroencephalogram between institutionalized and community children in Romania. *J Cogn Neurosci* 16(8):1327–1338.